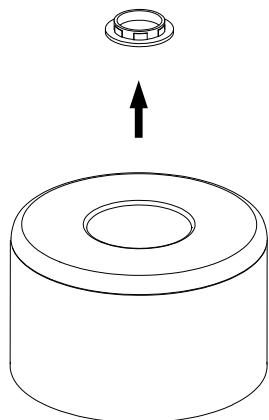


## INSTALLING INSTRUCTIONS

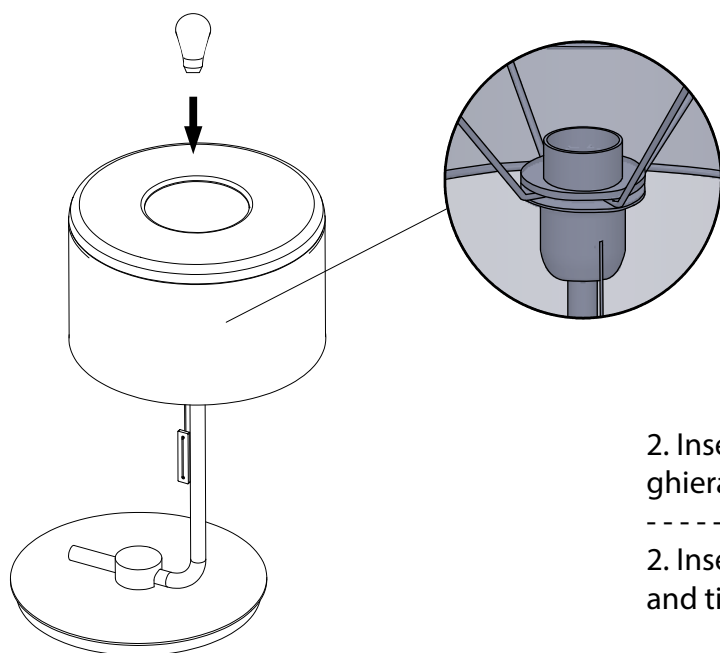
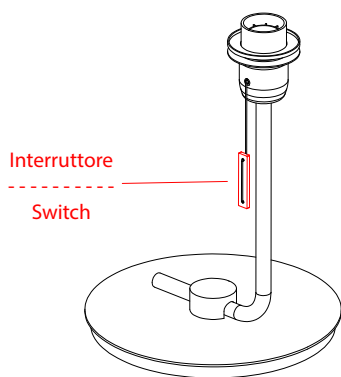
Pag. 1/1

ALL OPERATIONS MUST BE CARRIED OUT BY QUALIFIED PERSON



1. Rimuovere esclusivamente la ghiera dal portalampada ed infilare il paralume.

1. Remove only the ring nut from the lamp holder and insert the lampshade.



2. Inserire la lampadina, riposizionare la ghiera e stringere per fissare il paralume.

2. Insert the bulb, reposition the ring nut and tighten to fix the lampshade.