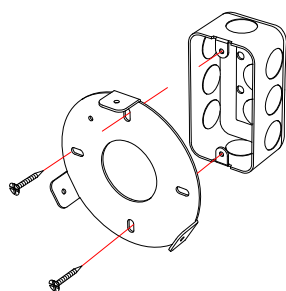


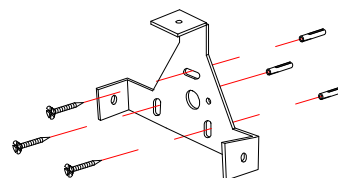
ALL OPERATIONS MUST BE CARRIED OUT BY QUALIFIED PERSON

- ① Fix the bracket on the wall (use appropriate anchors depending on the type of wall)

Fissare la staffa alla parete (utilizzare tasselli appropriati in base al tipo di parete).



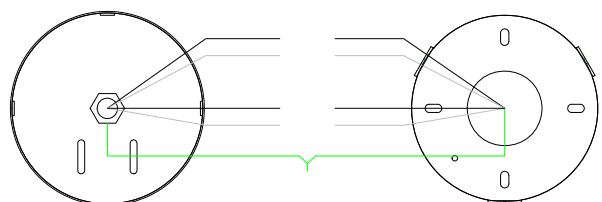
USA



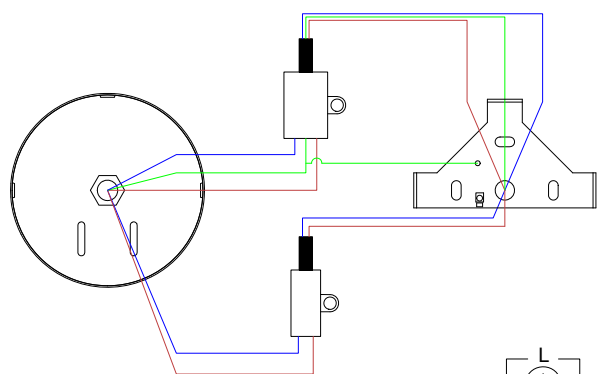
CE

- ② Connect the current cables following the sketch.

Connettere i cavi della corrente seguendo lo schema.



USA

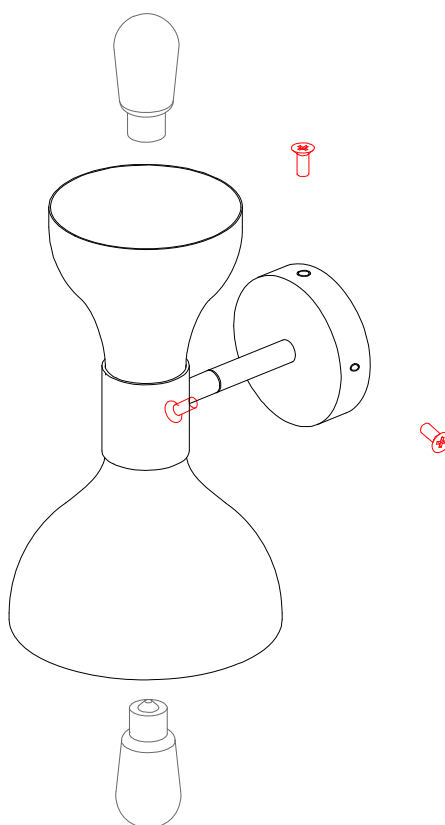


CE

ALL OPERATIONS MUST BE CARRIED OUT BY QUALIFIED PERSON

- ③ Fix the lamp to the bracket using the three screws supplied.
Insert the bulbs.

Fissare la lampada alla staffa utilizzando le tre viti fornite.
Inserire le lampadine.



- ⓘ Unscrew the plastic ring on the socket just in case of diffusers replacement.

